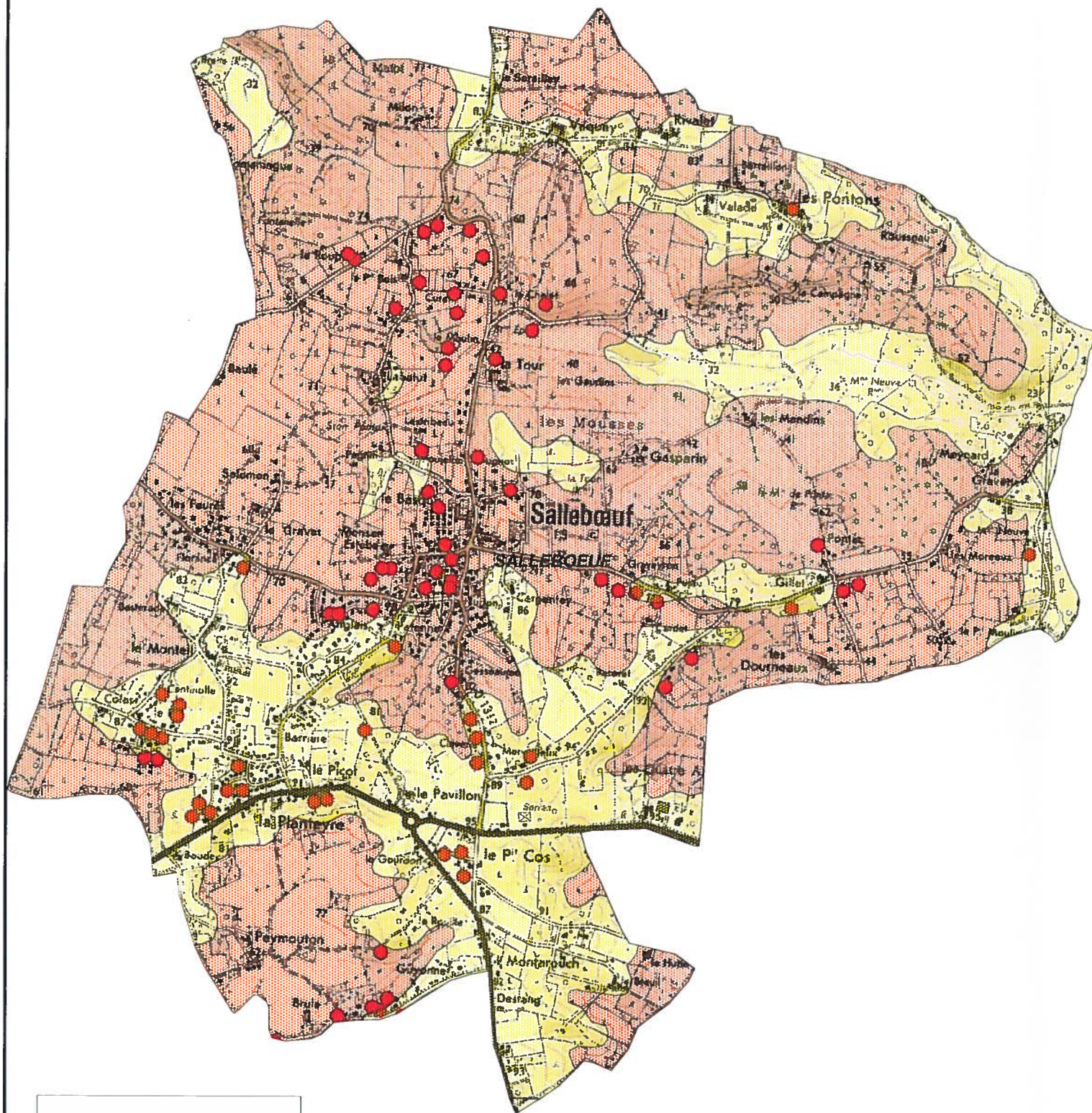


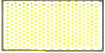
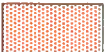


# Cartographie de l'aléa retrait-gonflement des argiles dans le département de la Gironde

Echelle 1/25 000

## Commune de SALLEBOEUF



### Niveau d'aléa

-  Aléa\_faible
-  Aléa\_moyen
-  Aléa\_fort
-  Sinistres\_reconnus



Porter à connaissance - Octobre 2009 - DDE 33 / STSR  
stsr.dde-Gironde@developpement-durable.gouv.fr

